

### SR Series

SR(General Models)Series Valve Regulated Lead Acid batteries are designed with AGM(Absorbent Glass Mat) technology, high performance plates and electrolyte to gain extra power output for common power backup system applications widely used in the field of UPS, Emergency Lighting System.

### Application

- Alarm System
- Cable Television
- Communications Equipment
- Control Equipment
- Security System
- Medical Equipment
- UPS
- Power tools
- Emergency Power System
- Toys

### Construction

- Component .....Raw material
- Positive .....Lead dioxide
- Negative .....Lead
- Container .....ABS
- Cover .....ABS
- Sealant .....Epoxy Resin
- Safety valve .....EPDR
- Terminal .....Copper
- Separator .....Fiber glass
- Electrolyte .....Sulfuric acid



### General Features

- Sealed and maintenance free operation.
- Non-Spillable construction design.
- ABS containers and covers(UL94HB, UL94V-0) optional.
- Safety valve installation for explosion proof.
- High quality and high reliability.
- Exceptional deep discharge recovery performance.
- Low self discharge characteristic.
- Flexibility design for multiple install positions.

### Performance Characteristics

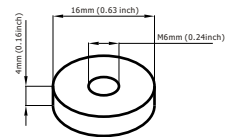
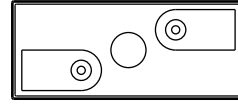
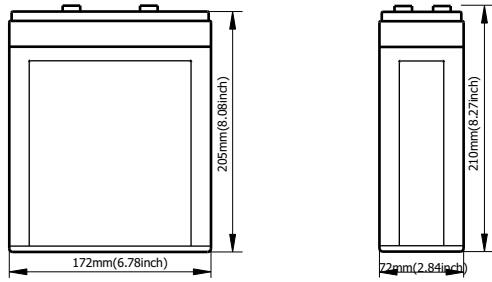
Battery Model	SR 2-100			
Designed Floating Life	8 Years			
Capacity(25°C)	20HR(5.05A,1.75V)	10HR(10A,1.75V)	5HR(17A,1.75V)	1HR(62A,1.75V)
	101AH	100AH	85AH	62AH
Dimensions	Length	Width	Height	Total Height
	171mm(6.73inch)	72mm(2.84inch)	205mm(8.07inch)	210mm(8.27inch)
Approx. Weight	5.75Kg (12.67 lbs)			
Internal Resistance	Full charged at 25°C :0.0009 Ohm			
Self Discharge	3% of capacity declined per month at (25°C)			
Capacity Affected by Temp.(20HR)	40°C	25°C	0°C	-15°C
	102%	100%	85%	65%
Charge Voltage(25°C)	Cycle use			Float use
	2.4-2.46V(-5mV/ °C), max. Current: 25A			2.26-2.30(-3mV/ °C)

### Constant Current Discharge Ratings-Amperes at 77°F(25°C)

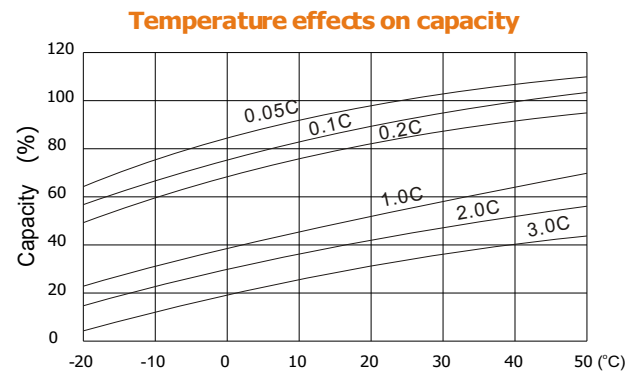
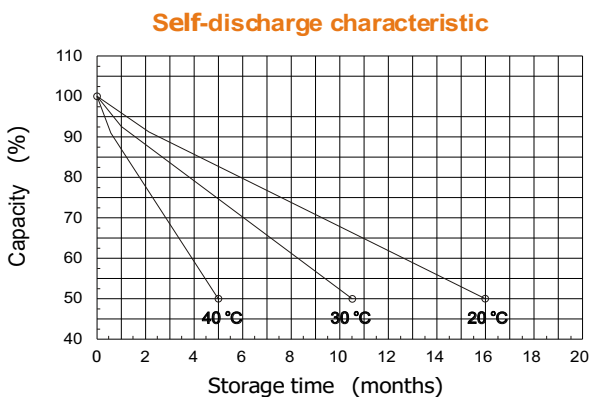
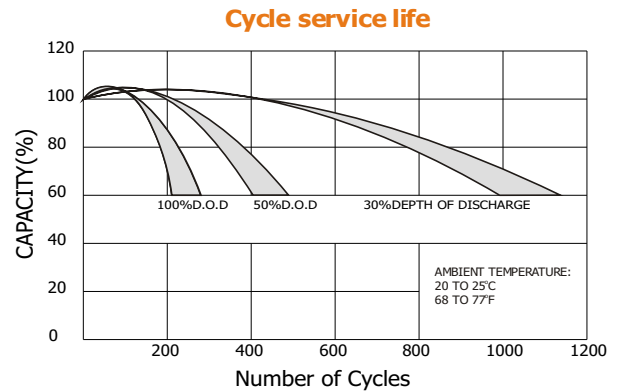
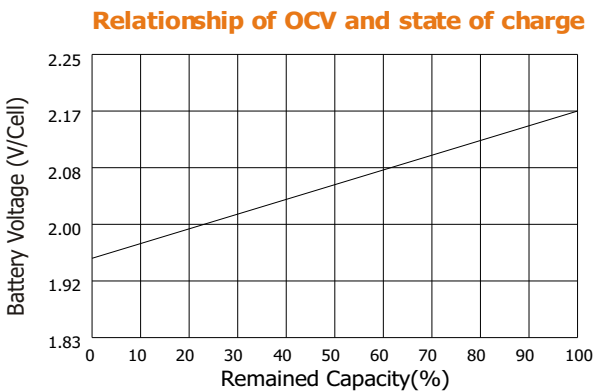
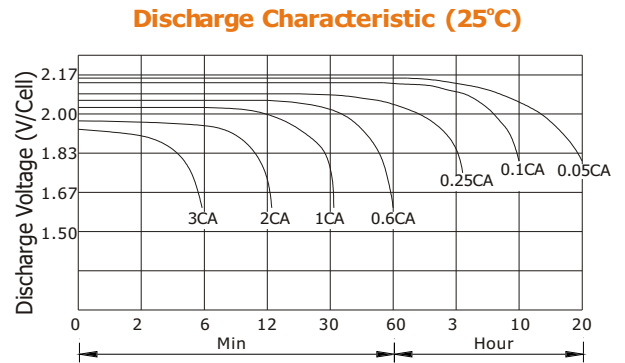
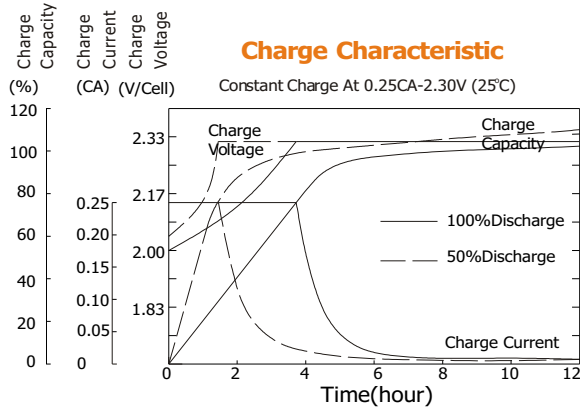
F. V/Time	5MIN	10MIN	15MIN	30MIN	1HR	3HR	5HR	10HR	20HR
1.60V	391	243	183	112	71.1	31.2	19.1	10.66	5.61
1.67V	367	231	176	107	70.1	30.0	18.7	10.56	5.41
1.70V	336	222	172	97.2	68.0	28.0	18.3	10.52	5.33
1.75V	329	215	167	92.4	64.8	27.1	17.9	10.38	5.19
1.80V	295	206	151	85.6	60.7	26.0	16.8	10.24	5.05
1.85V	260	196	136	78.8	56.5	25.1	15.7	10.10	4.91

### Constant Power Discharge Ratings-Watts at 77°F(25°C)

F. V/Time	5MIN	10MIN	15MIN	30MIN	1HR	3HR	5HR	10HR	20HR
1.60V	685	439	335	201	128	55.3	32.2	21.3	11.2
1.67V	661	428	331	197	127	53.6	32.1	21.2	10.8
1.70V	623	424	328	185	125	51.2	31.7	21.1	10.7
1.75V	627	422	325	179	123	50.0	31.4	20.8	10.4
1.80V	573	416	301	171	116	48.5	30.4	20.5	10.1
1.85V	520	395	273	160	109	47.1	29.4	20.3	9.7



Terminal Dimensions



**SUNRUI Electro-Tech Company Limited.**  
 Rm.1516,shejiBuilding,Zhenhua Rd.,Futian,ShenZhen China.  
 Postal Code: 518031.  
 Tel:(+86-755)83788480 Fax:(+86-755)83788006  
 Website: www.sumrum.com E-mail: sales@sumrum.com

